

Relação do aço

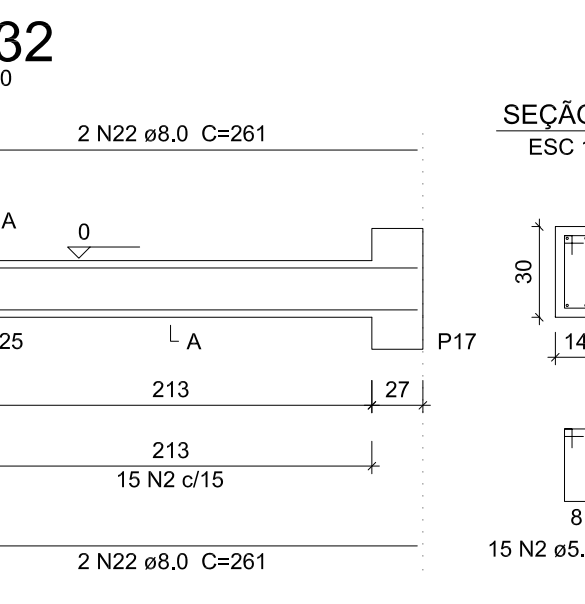
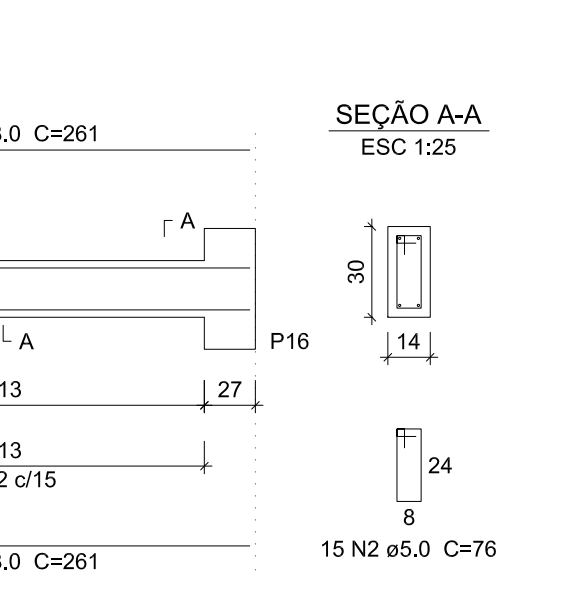
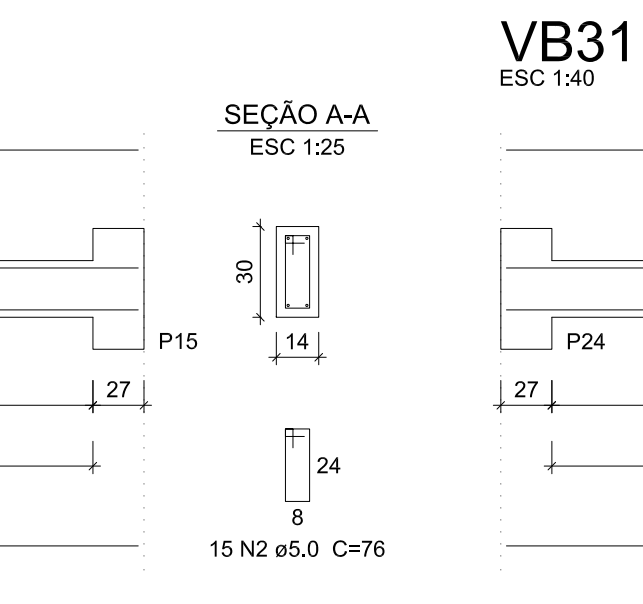
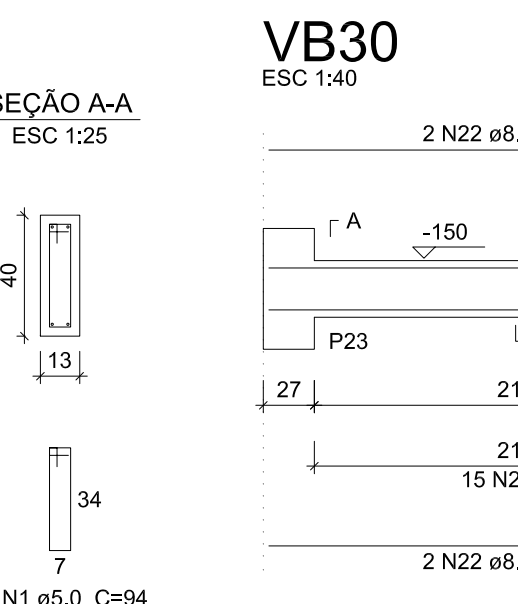
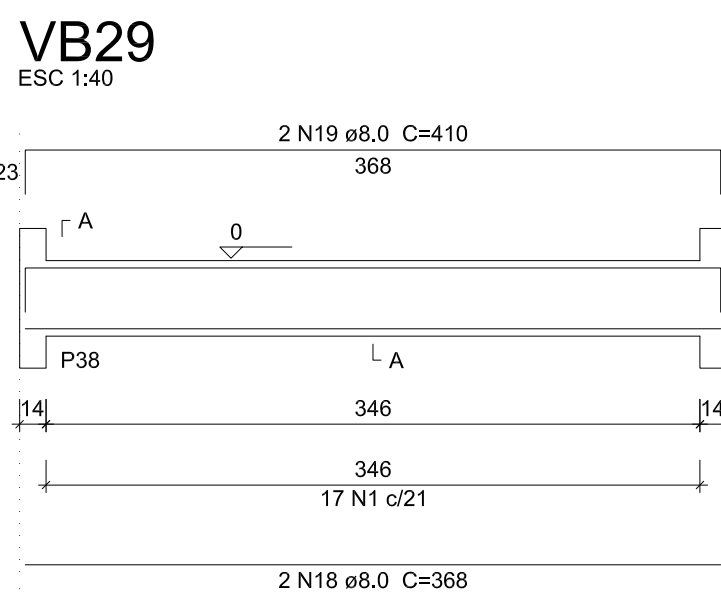
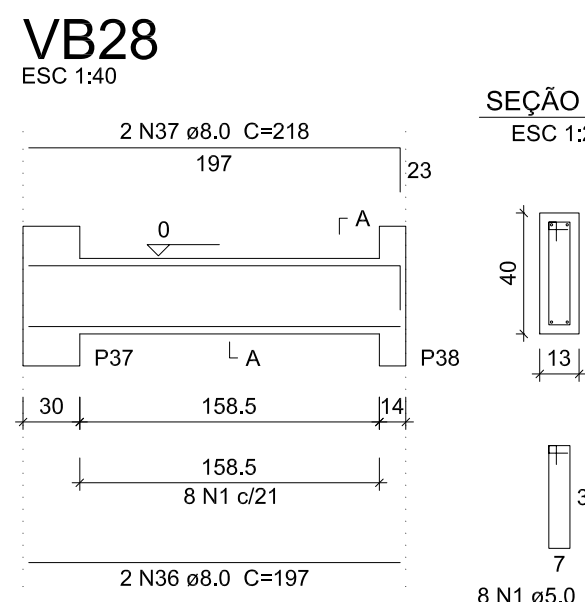
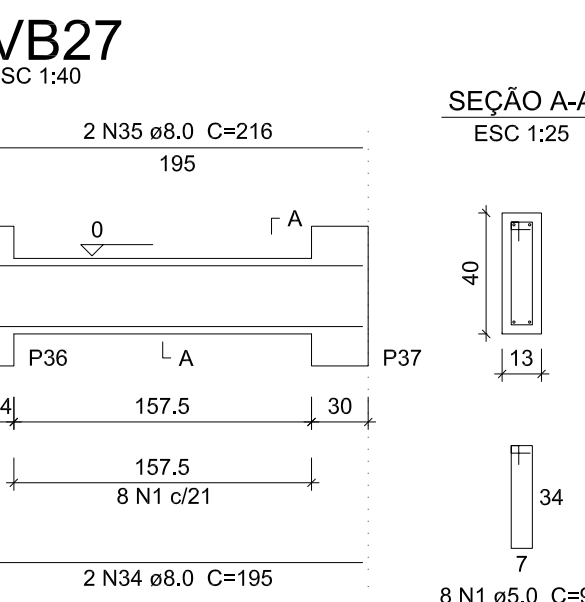
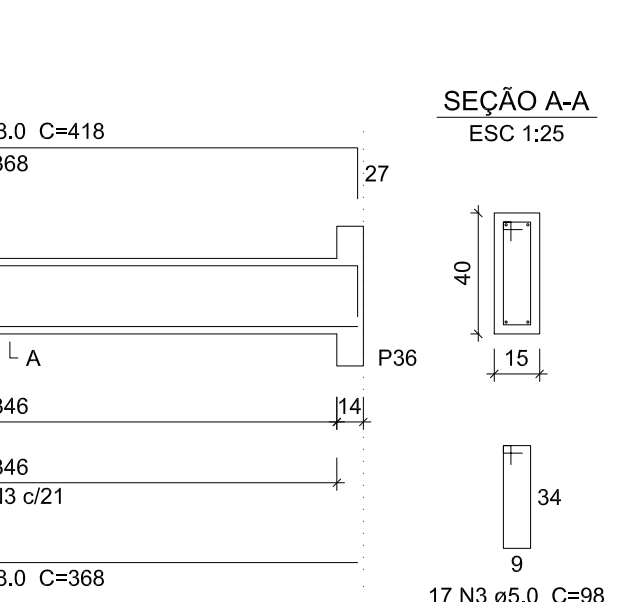
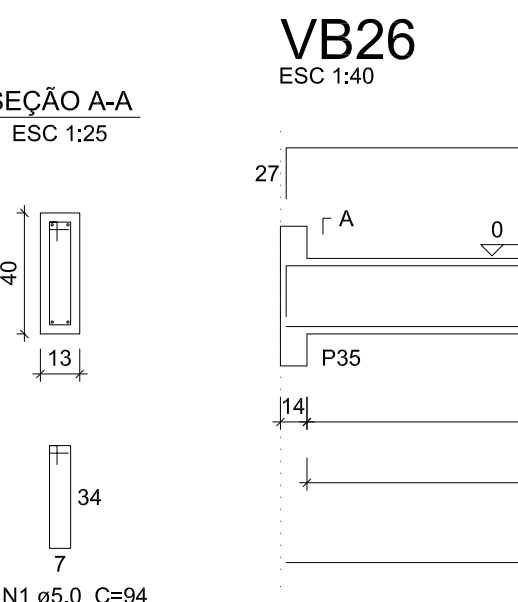
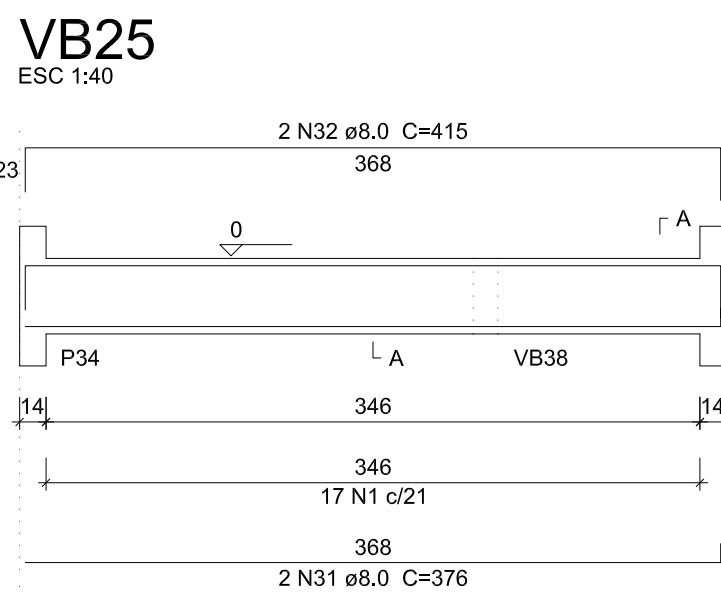
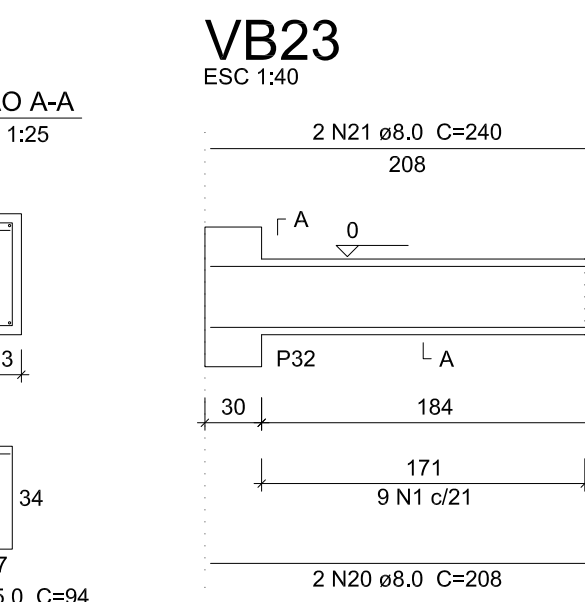
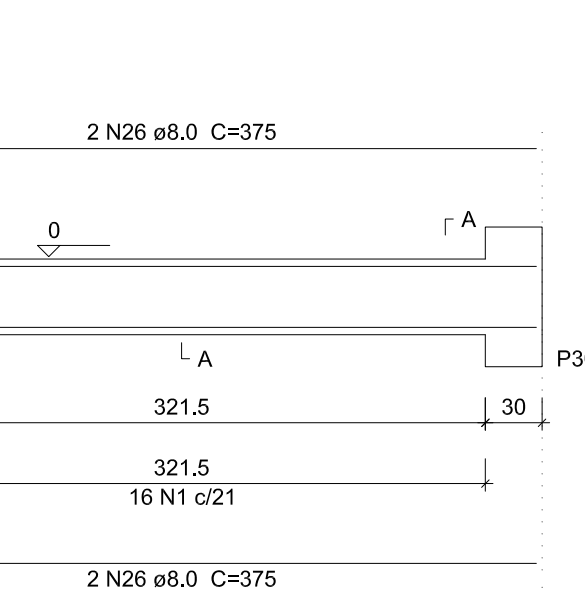
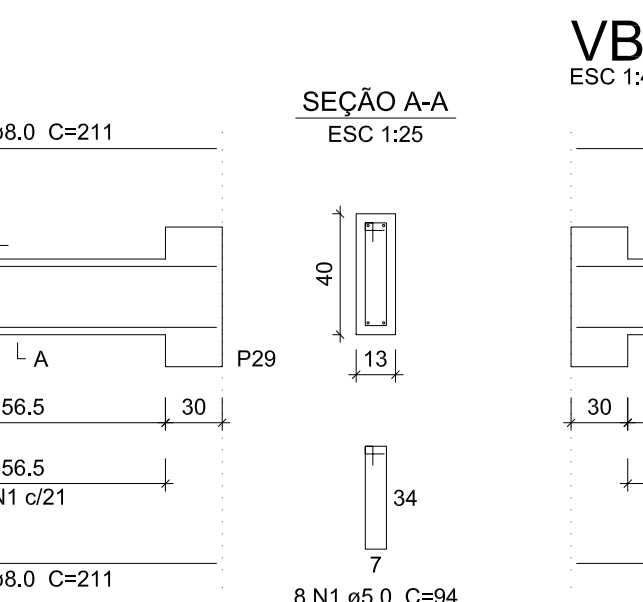
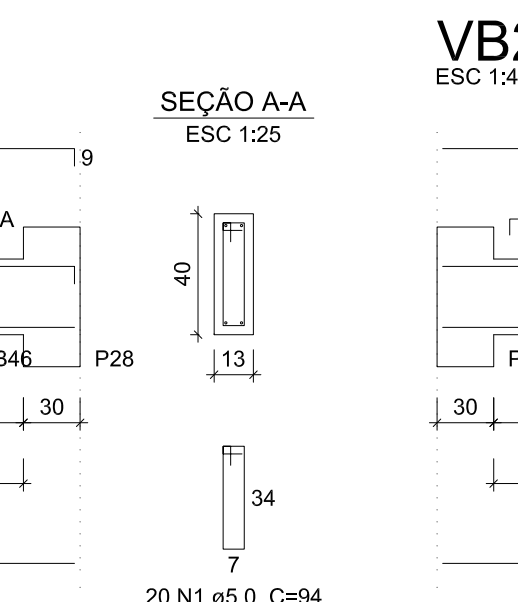
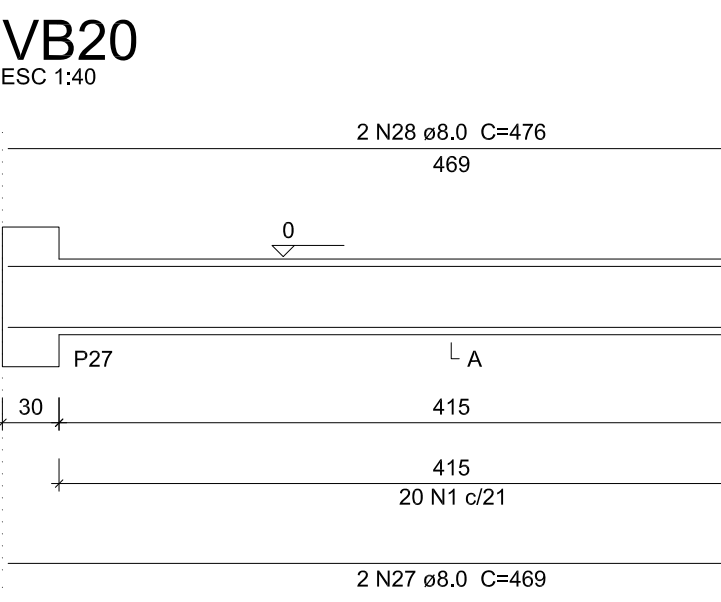
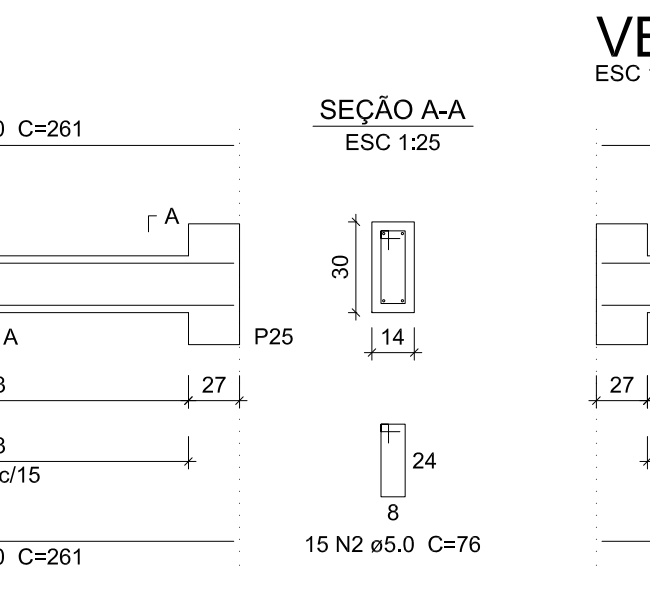
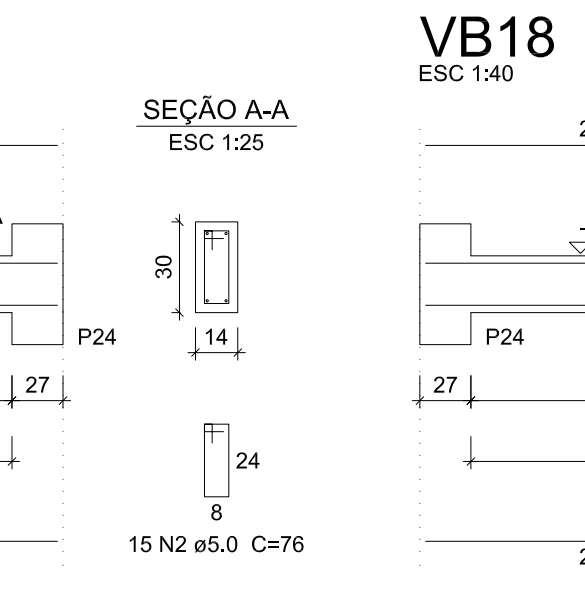
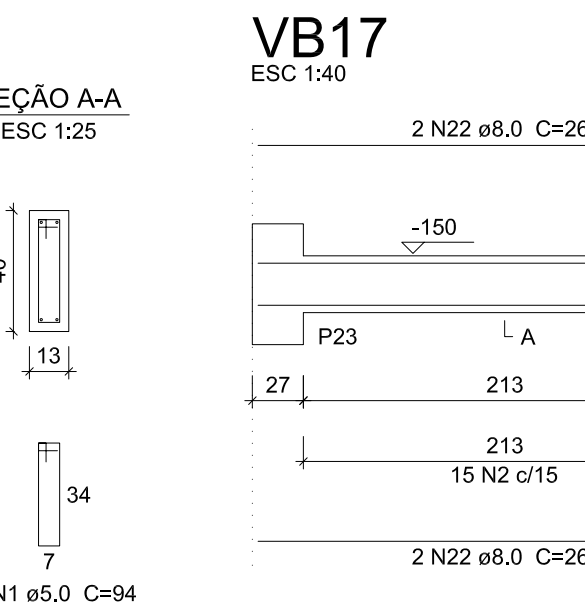
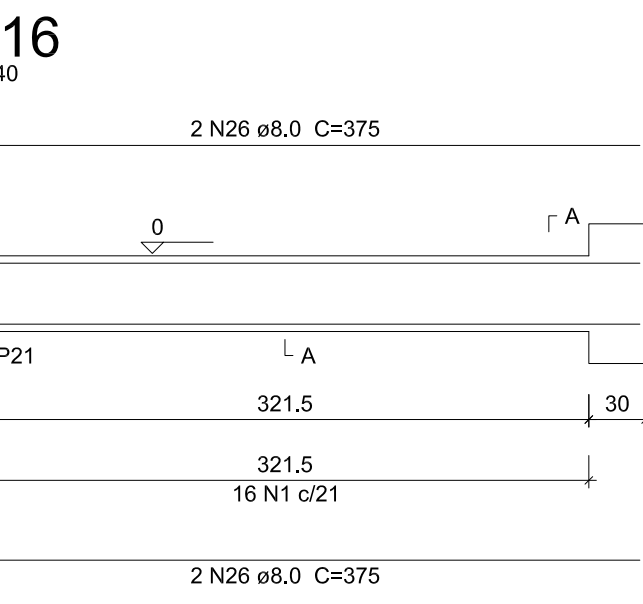
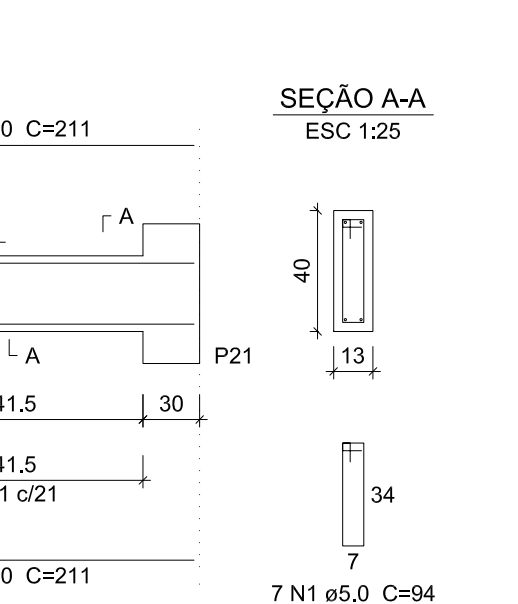
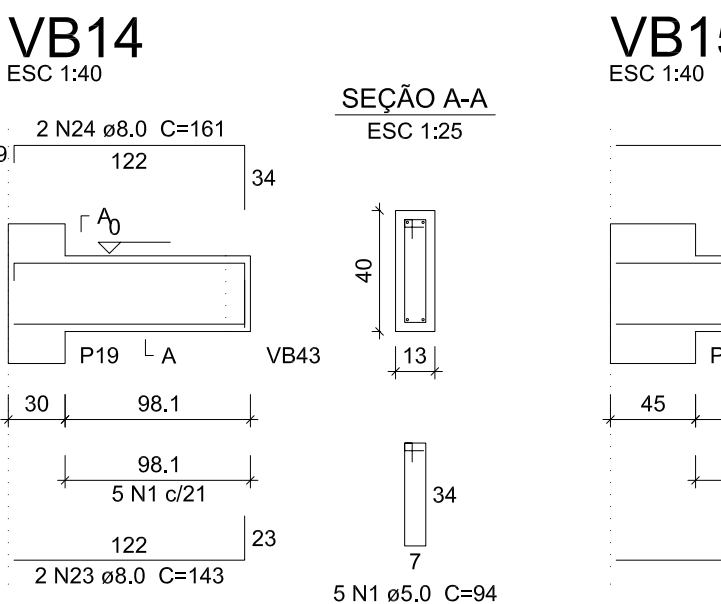
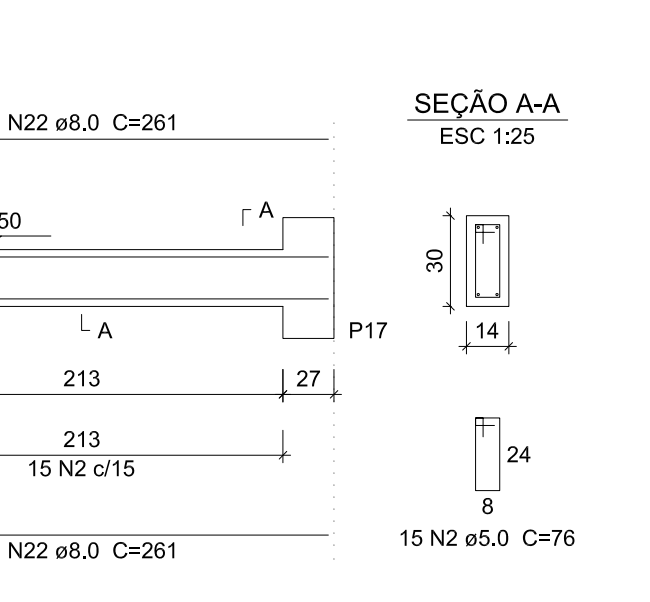
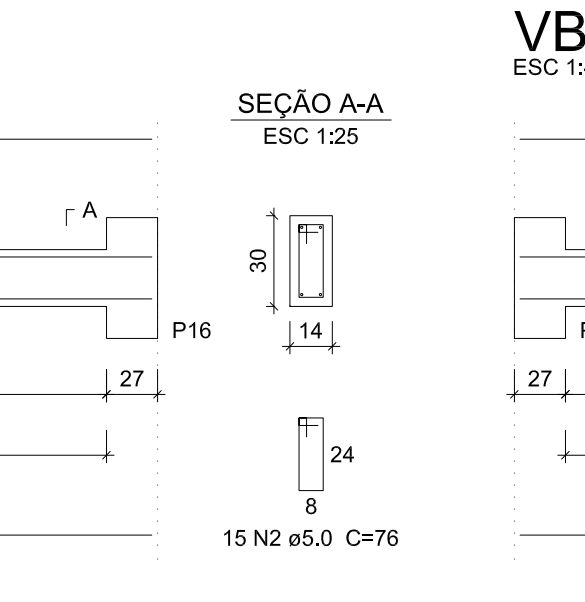
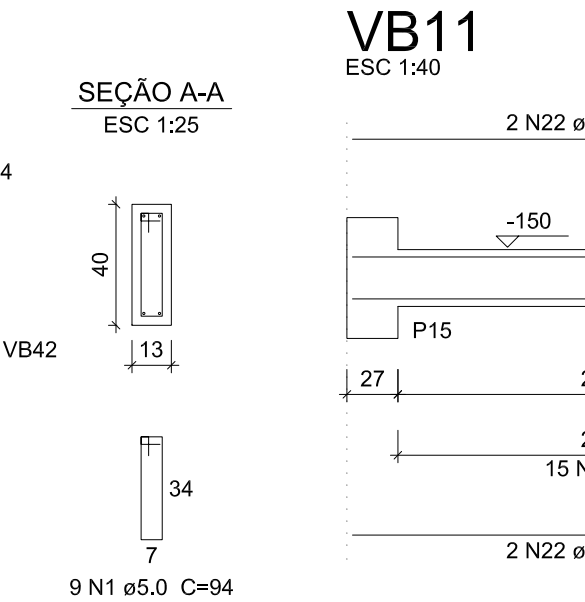
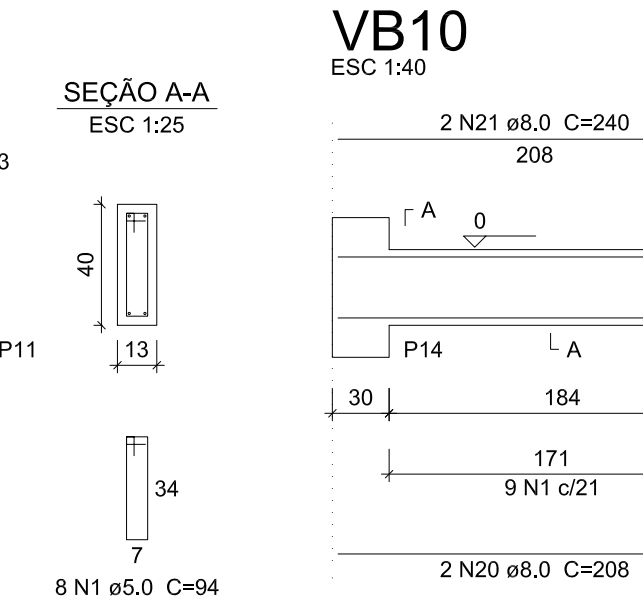
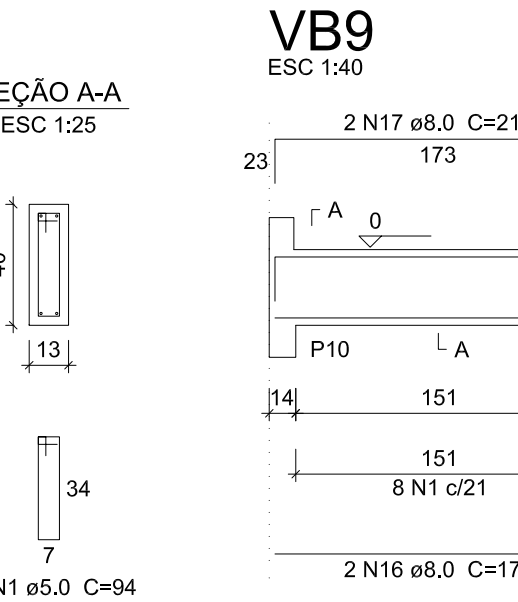
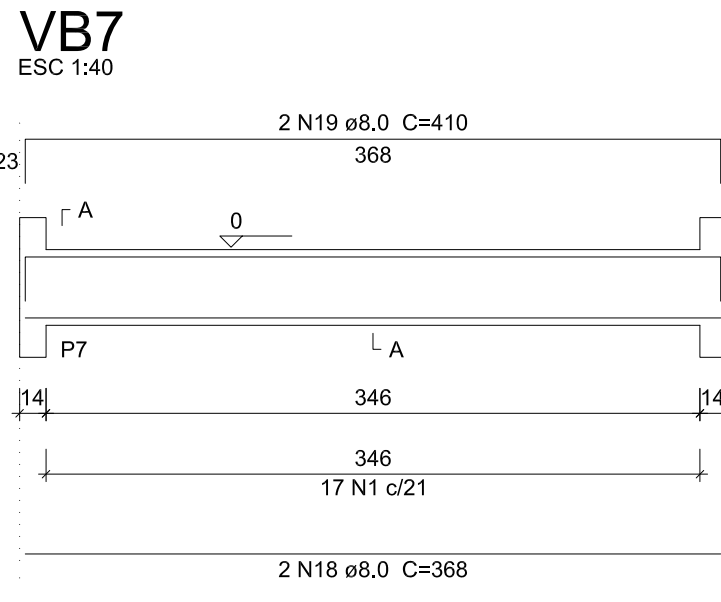
VB1	VB2	VB3
VB4	VB5	VB6
VB7	VB8	VB9
VB10	VB11	VB12
VB13	VB14	VB15
VB16	VB17	VB18
VB19	VB20	VB21
VB22	VB23	VB24
VB25	VB26	VB27
VB28	VB29	VB30
VB31	VB32	VB34
VB36		

ACO	N	DIAM	Q	UNIT (cm)	C.TOTAL (cm)
CA60	1	5.0	236	94	22184
	2	5.0	135	76	10260
	3	5.0	17	98	1666
	4	8.0	2	249	498
	5	8.0	2	291	582
	6	8.0	2	127	254
	7	8.0	2	169	338
	8	8.0	2	204	408
	9	8.0	2	246	492
	10	8.0	2	172	344
CA50	11	8.0	2	214	428
	12	8.0	2	174	348
	13	8.0	2	216	432
	14	8.0	2	202	404
	15	8.0	2	244	488
	16	8.0	4	173	692
	17	8.0	4	215	860
	18	8.0	6	368	2208
	19	8.0	4	410	1640
	20	8.0	4	208	832
	21	8.0	4	240	960
	22	8.0	36	261	9396
	23	8.0	2	143	286
	24	8.0	2	161	322
	25	8.0	8	211	1688
	26	8.0	8	375	3000
	27	8.0	2	469	938
	28	8.0	2	476	952
	29	8.0	2	88	176
	30	8.0	2	120	240
	31	8.0	2	376	752
	32	8.0	2	415	830
	33	8.0	2	418	836
	34	8.0	2	195	390
	35	8.0	2	216	432
	36	8.0	2	197	394
	37	8.0	2	218	436
	38	8.0	8	141	1128

Resumo do aço

ACO	DIAM	C.TOTAL (m)	PESO (kg)
CA50	8.0	344.1	135.8
CA60	5.0	341.1	52.6
PESO TOTAL			
CA50		135.8	
CA60		52.6	

Vol. de concreto total (C-25) = 4.17 m³
Área de forma total = 73.81 m²



DETALHAMENTO DAS VIGAS DO PAVIMENTO BALDRAME
ESCALA: INDICADA



GERÊNCIA DE PROJETOS E INFRAESTRUTURA
APROVADO
TÉCNICO RESPONSÁVEL PELA APROVAÇÃO

C.E. PROF. JOAQUIM FRANCISCO SANTIAGO

AMPLIAÇÃO E REFORMA

ENDEREÇO
RUA XAVANTES COM AV. BERNADO SAYÃO, SETOR EVEREST,
NIQUELÂNDIA - GO

ÁREA DO TERRENO	ÁREA EXISTENTE	ÁREA DE REFORMA	ÁREA A CONSTRUIR DAS PASSARELAS	ÁREA TOTAL A CONSTRUIR	ÁREA TOTAL
9.609,99m²	-	-	488,78m²	3.591,01m²	3.591,01m²

AUTOR: FÁBIO EMMANUEL MATOS PERIOTTO | CAU: A1080090

RT DA OBRA:

PROPRIETÁRIO: SECRETARIA DE ESTADO DA EDUCAÇÃO CNPJ: 01.409.705.0001-20
PREPOSTO: JESSICA ALVES BUENO SOUSA CPF: 033.178.021-62

ESTRUTURAL BLOCO ADM

TIPO DE PROJETO
DETALHAMENTO DAS VIGAS DO PAVIMENTO BALDRAME

ASSUNTO:

DATA: JUNHO/2022 ESCALA: INDICADA REVISÃO: 000 Nº RRT/ART:

REV.	DATA	DESCRIÇÃO	VISTO

4/9

FOLHA: